

Patented



*Experience*

THE ELLIQUENCE STATE-OF-THE-ART FACILITY



**Recommended Airport:**  
John F. Kennedy

**Recommended Accommodations:** *(Corporate Rate Code is "elliquence")*

Hampton Inn, Rockville Centre NY (516) 599-1700

Allegria Hotel, Long Beach NY (516) 889-1300

**Recommended Transportation:** *(Please Call and Schedule Ahead)*

Taxi: All Island Taxi Service (516) 536-3333

Car Services: *(Mention "elliquence" for our Corporate Rates):*

Peter Larkin (516) 398-3881 / Dynasty Limousine (631) 587-8500 or (888) 999-0982

*\*Only transportation to and from the recommended hotels above and elliquence Headquarters on the day of the workshop will be provided.*

**elliquence Educational Institute**  
at elliquence Headquarters

2455 Grand Avenue, Baldwin • New York 11510 U.S.A.  
(516) 277-9000 • Fax: (516) 277-9001 • [www.elliquence.com](http://www.elliquence.com)



**elliquence**  
Innovative Medical Solutions

Patented



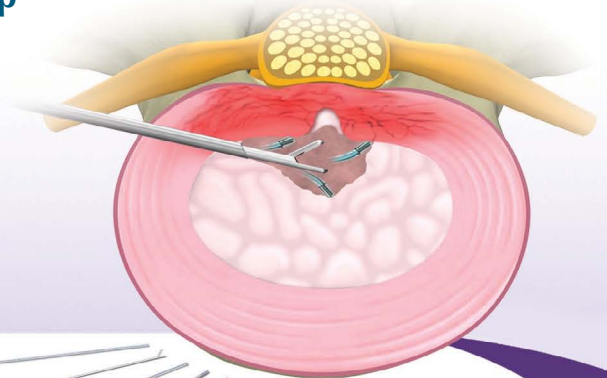
## Minimally Invasive Discectomy System Hands-On Workshop

February 20, 2016

May 14, 2016

August 27, 2016

December 3, 2016



Annulus  
Modulation



Nucleus  
Ablation



Specimen/  
Debulking



**elliquence Educational Institute**

at elliquence Headquarters, Baldwin, New York



## WORKSHOP OVERVIEW

*This workshop is designed for the practicing spine surgeon, neurosurgeon or interventional pain management doctor interested in minimally invasive lumbar spine techniques and procedures. Participants should already possess the understanding of spine anatomy as well as skills required for intradiscal needle placement. Workshops will be limited in attendance to ensure maximum hands-on during cadaveric instruction.*

## EDUCATIONAL OBJECTIVES

- Discuss minimally invasive spine procedure options
- Understand the patient indications and contraindications for using Disc-FX®
- Present multi-center clinical investigation results
- Demonstrate correct access into the disc space when using Disc-FX®
- Understand nucleus ablation and annulus modulation
- Perform a procedure using Disc-FX® on a cadaver specimen

## AGENDA HIGHLIGHTS

Characteristics of Radiowave Technology  
Anatomy  
Pathoetiology of Discal Diseases  
Disc-FX® Overview  
Disc-FX® Feasibility Outcome Study  
Q&A / Discussions

- Hands-On Sessions:
- Needle Placement / Discography
  - Disc-FX® Application
  - Intradiscal Techniques
  - Nucleus Ablation
  - Annulus Modulation

## CLINICAL FACULTY



**AJ Rastogi, MD**

Medical Director and Co-Founder of North American Spine & Pain Consultants New Jersey and Pennsylvania



**Stefan Hellinger, MD**

Director Medical Research Institute, Isar Kliniken, Munich, Germany



**Corey W. Hunter, MD**

Medical Director and Founder of The Ainsworth Institute

## Multiple Treatment Options in One System

### 1 Nucleus Decompression/Discectomy



### 2 Nucleus Ablation



### 3 Annulus Modulation

